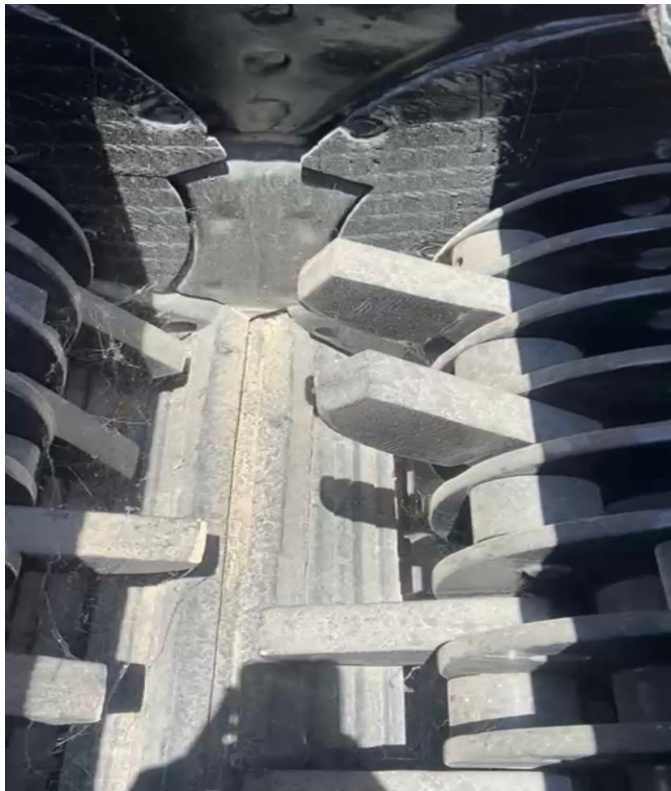


بريمة (دبل كرنك)
تنعيم





HAZEMAG



Type :	HCS 0640 (Double Rotor)
Machine No :	2002146
Year of Manufacture :	2003
Feed Opening :	760 x 300 mm
Rotor Diameter :	500 mm
Rotor Length :	600 mm
Number of Rotors :	2 (Double Shaft)
Max Feed Size :	≤ 100 mm
Output Size :	0 - 40 mm (Adjustable)
Capacity :	40 - 80 t/h
Motor Power :	45 KW x 2 (3 - Phase , 400v, 50Hz)
Rotation Speed :	180 rpm (each shaft)
Weight :	≈ 5,500 kg (Approx.)

MADE IN GERMANY