



PE

0610 Jaw Crusher



The Affordable Alternative in New Crushing Equipment

Standard Features

- Cast steel frame
- Open back for easy maintenance
- Reversible manganese jaw dies for maximum wear life
- Spherical, self-aligning roller bearings
- Isolated, close running annular/labyrinth seals protect bearings from dust and water
- Removable pitman/bearing assembly for maintenance ease
- Manual adjustment discharge setting
- Cast steel pitman with machined barrel

Optional Features

- Electric motor
- Drive sheave and bushing
- Smooth Jaw Die



The Affordable Alternative in New Crushing Equipment

Specifications

Feed opening 6" x J0"
 Discharge setting 3/8" to 1 1/2"
 Maximum feed size 4 7/8"

Production range J to 5 TPH

Discharge setting

3/8" 1 to 2 TPH

1" 2 to 4 TPH

1-1/2" 3 to 5 TPH

Required horsepower 25 HP

Rotor speed 300 RPM

Weights (LBS)

Crusher 1,790

Flywheel 230

Swing jaw die 55

Fixed jaw die 55

Standard part dimensions (inches)

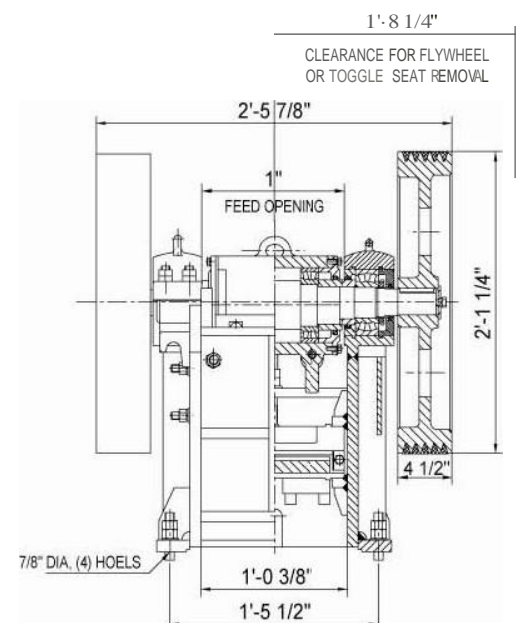
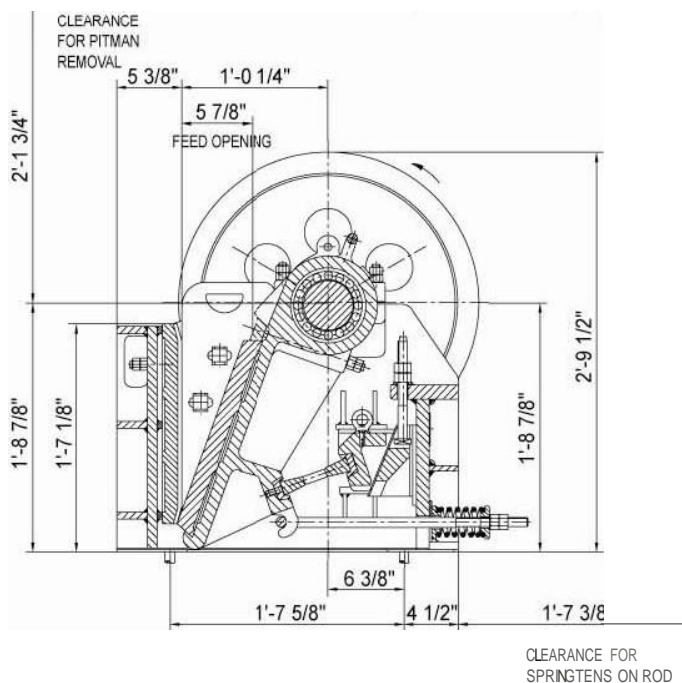
Fixed jaw length 17 1/2"

Swing jaw length 16 3/4"

Bearing information

Pitman bearing No 22313CA/W33

Frame bearing No 22218CA/W33



Note: Because of the nature of jaw crushers, it is not possible to produce a product all of which will pass a screen opening equivalent to the discharge setting. Oversize should be expected, and will fluctuate depending on the rock characteristics. For close settings, all undersize material should be screened off to increase the effectiveness of the jaw and to reduce wear on the jaw dies. Although the crusher may be configured to have a different discharge opening than indicated above, this crusher model is not designed to operate at other settings.

Design & Specifications Subject to Change Without Notice

August 2009

Jamil Ghalib Khirfan for Trading Equipment Est
 +962 799229006